



# Facilities and Rates

Edwards YMCA Camp sits on 132 acres along the shores of Lake Beulah in East Troy, WI. Located just 30 minutes from Milwaukee and an hour and a half from the metro Chicago area, a woodland adventure is not too far away. Camp Edwards has ample outdoor space along with accommodating indoor areas to make your event or field trip amazing. Explore our pine forest or venture through the marsh to Edwards Island. Relax in one of the lodges or marvel at the cold blooded critters in the Nature Center. This rustic hideaway will be a place you and your group will not forget!

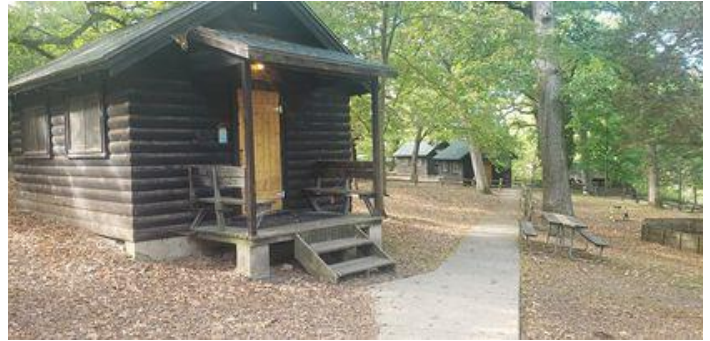
## Lodging

### Cabin Area

Our **cabin area** is comprised of 16 rustic cabins, which are in short walking distance of our bathhouse, the KYBO. Each cabin has basic accommodations that include electricity, heat, and a large fan. The cabin area can accommodate 174 people in total.

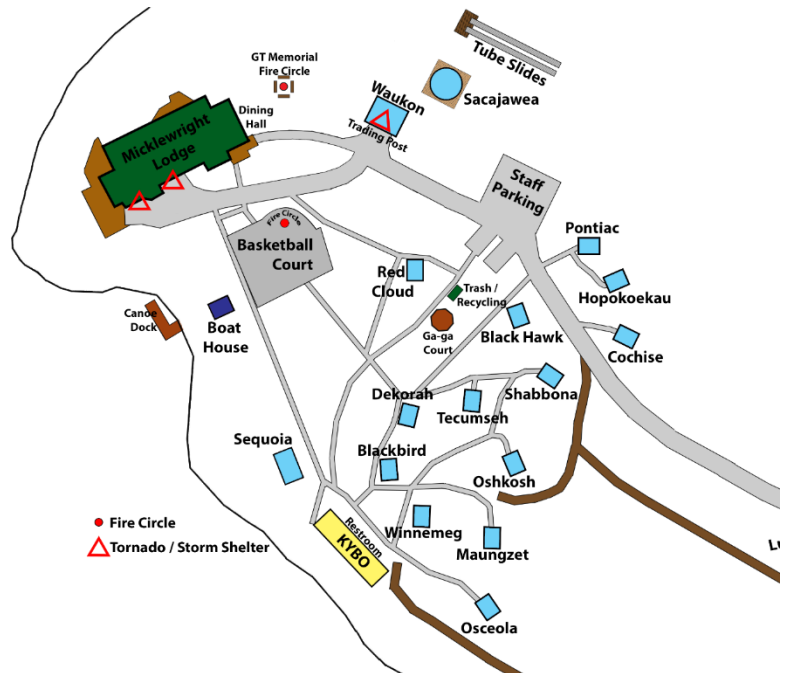
#### Reserved for Cabin Area Groups

- Loft Area above Dining Hall
- Basketball Courts by Dining Hall
- Gaga courts in cabin area
- Main dining room of Micklewright Lodge



#### Cabins (# of people)

- Blackbird (10)
- Black Hawk (10)
- Cochise (10)
- Dekorah (10)
- Hopokeokau (10)
- Maungzet (10)
- Osceola (10)
- Oshkosh (10)
- Pontiac (10)
- Red Cloud (10)
- Sacajawea (12)
- Sequoia (16)
- Shabbona (10)
- Tecumseh (10)
- Waukon (16)
- Winnemeg (10)



**The loft** is directly above the office space in Micklewright Lodge and has 4 bedrooms. It accommodates 11 people with 2 full bathrooms and a cozy kitchen.

**Loft** (# of people)

- Room 1 (3)
- Room 2 (3)
- Room 3 (3)
- Room 4 (2)



## Lodges



**Runge Lodge** features air conditioning along with a large meeting room, a kitchen area, and full bathrooms near or adjoining to bedrooms. This Lodge sleeps 32 people; 8 rooms sleeping 4 people.

**Hoffer Lodge** features air conditioning along with a large meeting room, a kitchen area, and full adjoining bathrooms to bedrooms. This Lodge sleeps 34 people. 8 rooms sleeping 4 people each with an additional room that sleeps an extra 2 people.

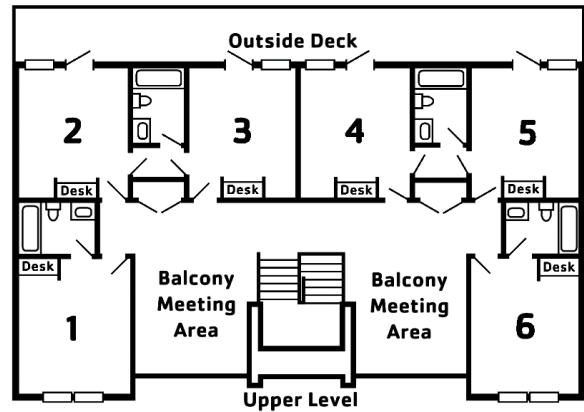
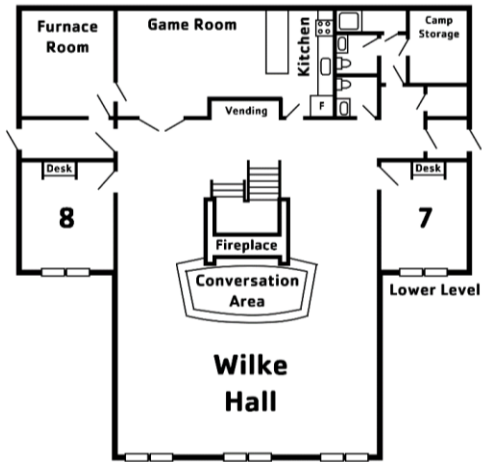


## Reserved for Lodge Area Groups

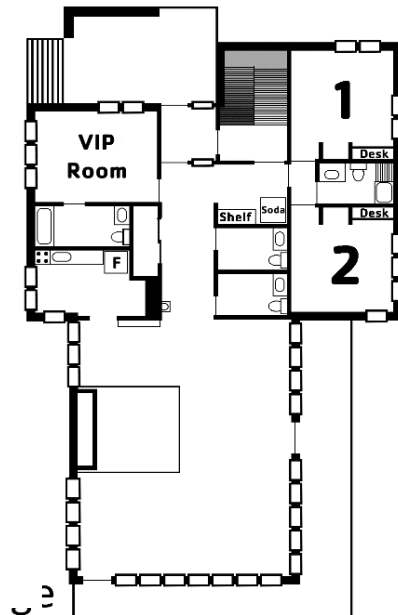
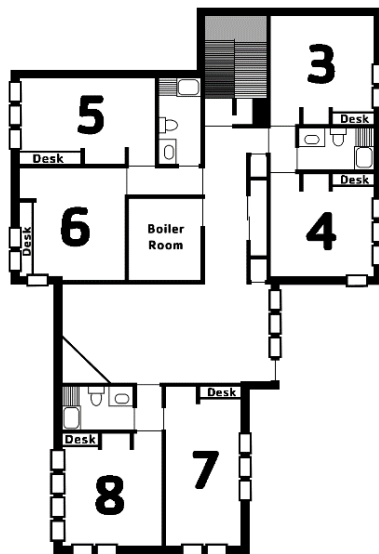
- Basketball Court by Lodges
- Gaga pit by Lodges

If both lodges are not booked then camp staff will coordinate which areas will be used at each time.

### Runge Lodge Map



### Hoffer Lodge Map



# Program Areas

We offer a wide-variety of programs and program areas for your group or school to use. Below are our larger spaces for people to gather both indoors and out. Cooper Recreation Center and Micklewright lodge along with both Runge and Hoffer Lodges offer severe weather shelters.

## Cooper Recreation Center

Cooper Recreation Center (CRC) is the newest building here at Camp Edwards. It features an indoor gymnasium equipped with supplies for volleyball, basketball, dodgeball, floor hockey, and more. The CRC also can be divided in half to facilitate 2 activities at once. It also includes an arts and crafts room and public restrooms. Capacity of gym is 100 people, depending on activity, and the arts & crafts room is 30.



## Micklewright Lodge/Dining Hall

Micklewright Lodge is the hub of Camp Edwards. This building was built in 1929 for the first summer of camp. Though there have been modern updates including heat, public restrooms, and a modern

kitchen, this building still has the charm it did in 1929. This building features a large dining room with fireplace, a porch area that overlooks Lake Beulah, and two smaller classroom spaces including our Nature Center.

Capacity of dining hall is 150 people, porch is 70 people, and each classroom is 20 people.





## Amphitheater

The amphitheater provides a great location for a large group meeting area. It can hold around 200 people comfortably. The amphitheater has a campfire circle, lights, and a sound system that are available for your use.



## Camphitheater

Just a short 7-minute walk away from the Lodges is the Camphitheater. This rustic campfire circle can seat 80 students and is a great location for a classic campfire production or as a starting point for night hikes in the pine forest.

## Chapel

The Camp Edwards chapel is located on top of sunset hill, just past the tube slides. It can be used for religious meetings, a great outdoor meeting place for classes, or a spot for quiet contemplation.

This secluded place high above camp can seat 150 people.



## Recreation Area

2 Basketball Courts  
Sand Volleyball Court  
Archery Range \*  
Fishing  
Canoeing/Kayaking \*  
Arts & Crafts\*

2 Gaga Pits  
Hiking Trails  
Marsh Boardwalk  
Tube Slides  
Group Initiatives  
Nature Center\*

Climbing Wall \*  
Zip line \*  
High Rope Course\*  
Low Ropes \*  
Field Sports  
Campfires

\*Camp Edwards Staff Facilitated

# Basic Rates

Camp Edwards offers a wide variety of options for your group. Whether it be a day trip with your school group or a retreat for your church, we would be happy to have you join us. In order to put together a complete trip for your group, we will build a package specific to your group and your needs. Below are the basic rates for an adventure to Camp Edwards. Additional meals, activities, and other needs may be an additional cost. Please speak with a Camp Edwards Staff to get your quote.

## Day Rental & Field Trips

Below is base pricing for day trips, meals are not provided unless requested with an additional fee. All chaperones may attend for free unless having camp provided meals. Some activities will have additional fees, such as High Ropes and Zip Line. Please speak with Camp Edwards Staff for a complete trip estimate.

Half Day (less than 4 hours): \$10 per student  
 Day (4-7 hours): \$15 per student  
 Extended Day (more than 7 hours): \$20 per student

## Overnight Rates

Looking for an overnight experience? We offer different levels of comfort at Camp Edwards.

Below is standard pricing for both these accommodations. Rates different for Friday and Saturday nights. Rates are quoted on a per person basis and may vary based on group size, number of meals, additional facilitators, and activity choices. Please contact Camp Edwards to get a complete quote for your group.

	Weekday Sunday-Thursday		Weekend Friday-Saturday	
	1 Night, 3 Meals	2 Nights, 6 Meals	1 Night, 3 Meals	2 Nights, 6 Meals
Cabins	\$49/person	\$84/person	\$65/person	\$120/person
Lodges	\$55/person	\$100/person	\$78/person	\$130/person